

Angelheart Woodworking

1828 Marshall St NE #1, Minneapolis, MN 55418

612/578-1254; www.angelheartwoodworking.com

Door Ordering Form

Door Style (dbl., single, int. or ext.(or thickness) etc.): Single, interior

Hinge (L or R, see reverse): LEFT

Wood Type: walnut stile - cherry panels

Rough Opening:

Height: n/a

Width: n/a

OR:

Door Width: 36"

Door Height: 80"

Jamb Width: 4 3/4"

Handle Height: 39"

Stiles:

Outside Stile Width: 4 3/4"

Middle Stile Width: 4 3/4"

Rails:

Top Rails Width: 4 3/4"

Middle Rail Width: 4 3/4"

Bottom Rail Width: 8 3/4"

Panels:

Number of Panels (horizontal): 2

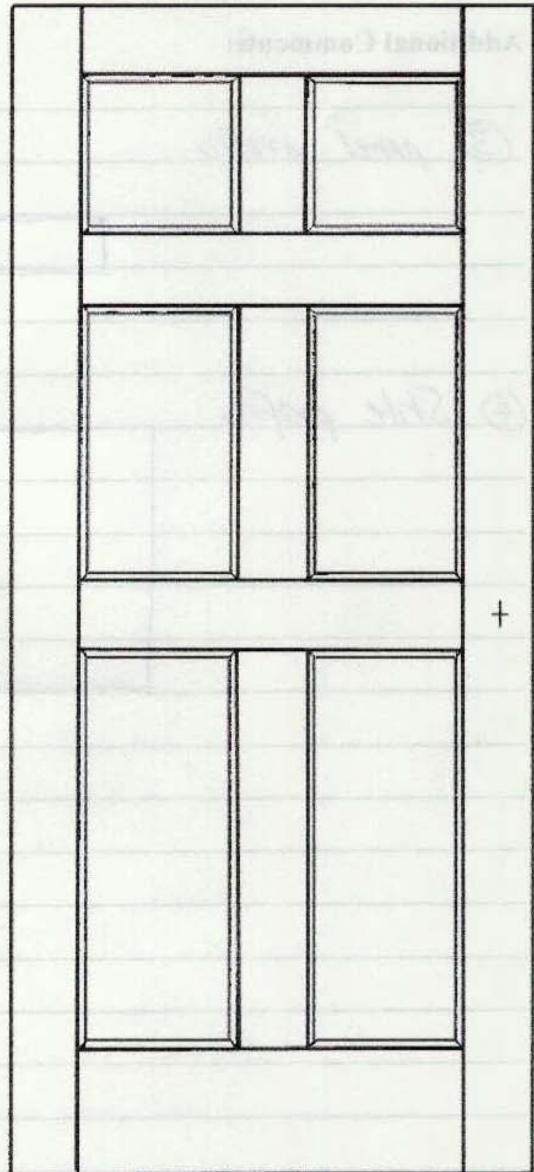
Number of Panels (vertical): 3

Panel Design (raised, flat solid, flat ply):

raised (bevel)

Notes:

If the doors are double French doors, please specify R.O. or actual inside of jamb to inside of jamb dimension in addition. If there are more than three panels in the door, please specify all rail widths. When determining rail widths, please assume that the width of the rail is the width of that flat part of the rail (do not include profile dimension). If no specs are made for various measurements there will be assumptions made and applied, for instance (Outer stiles will be set @ 4 3/4, Door handle height is set to 39", etc.)



Comments:

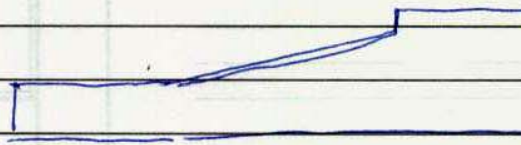
① please make jambs of cherry

② please make rail that is @ door handle height 16" wide

For determination of which side the hinges will be placed please determine as follows. Imagine you are facing the door and if you open the door it will open TOWARDS you. The hinges will be either on the RIGHT or the LEFT. Please specify RIGHT or LEFT hinged. Some doors have stiles & rails with varied widths, please be sure to specify all of the stile and rail widths. If there is not a category on the previous page for what you are looking for, please use the space provided on the previous page or below to give this information. On all door orders the material cost of the hinges will not be included in the price and an additional charge will be added for radius corner hinges. In addition to this, bid prices do not include boring and installation of door hardware (price includes mortising for hinges except where noted above). Finishing is the responsibility of the client. Bids include Jambs and door stop.

Additional Comments:

③ panel profile



④ Stile profile

